

EASTWOOD NO. 3 OF WELLINGTON P.U.D.

IN PART OF SECTIONS 2 & 11, TWP. 44 S., RGE. 41 E.
PALM BEACH COUNTY, FLORIDA
IN 4 SHEETS SHEET NO. 4

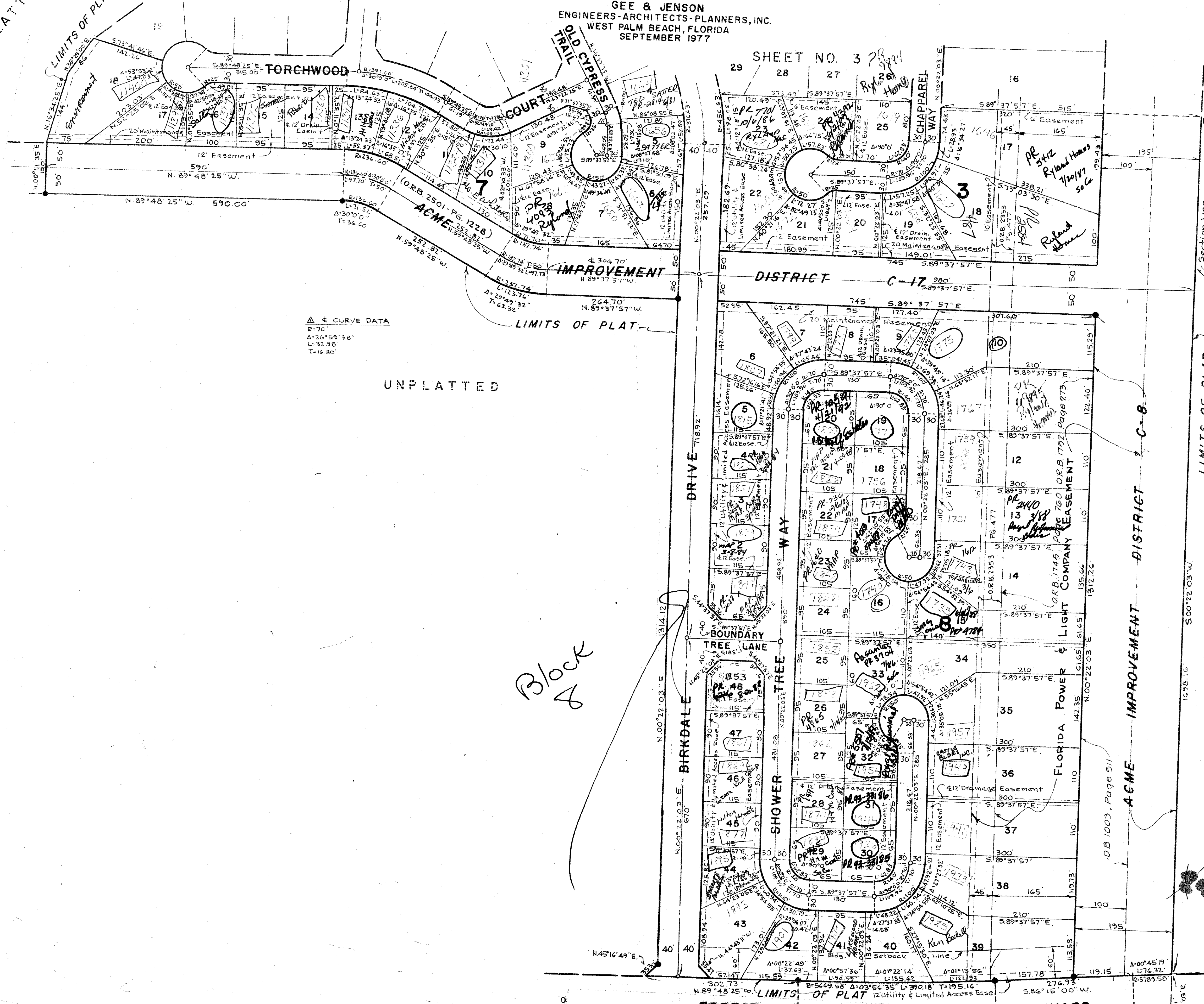
GEE & JENSON
ENGINEERS-ARCHITECTS-PLANNERS, INC.
WEST PALM BEACH, FLORIDA
SEPTEMBER 1977

SHEET NO. 3

SHEET NO. 3

UNPLATTED

LIMITS OF PLAT



△ & CURVE DATA
R=70'
Δ=26°59'38"
L=32.98'
T=16.80'

UNPLATTED

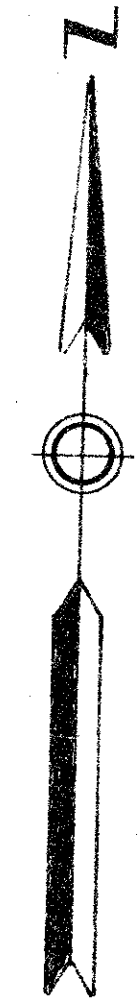
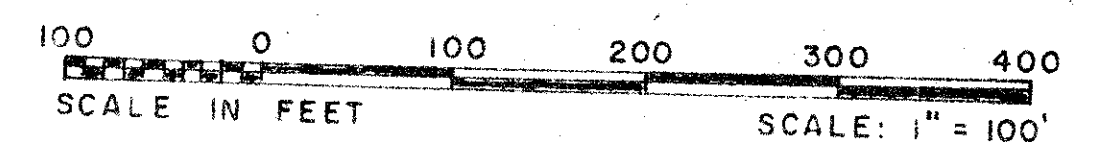
Block A

Section Line

LIMITS OF PLAT

UNPLATTED

NOTES



Handwritten note: Zone B, PD-1 part of sheet 4

62

All bearings shown hereon are relative to an assumed meridian used throughout Wellington.
Building Setback Lines shall be as required by Palm Beach County Zoning Regulations.
There shall be no buildings or other structures placed on Utility Easements.
There shall be no buildings or any kind of construction or trees or shrubs placed on Drainage Easements.
Easements are for Public Utilities, unless otherwise noted.
● denotes Permanent Reference Monument.
○ denotes Permanent Control Point.
Where Utility Easements and Drainage Easements cross, Drainage Easements shall take precedent.

2011/11/11

0332-015

Tangent Bears N.87°00'19"E.

TURNOUT REQUIRED

35/171

STATE OF FLORIDA
COUNTY OF PALM BEACH SS
This Plat was filed for record at this day of 1978, and duly recorded in Plat Book No. on page
JOHN B. DUNKLE, Clerk Circuit Court By _____, D.C.

17

EASTWOOD

UNPLATTED

11 12
14 13